

# GBEP & UN Foundation

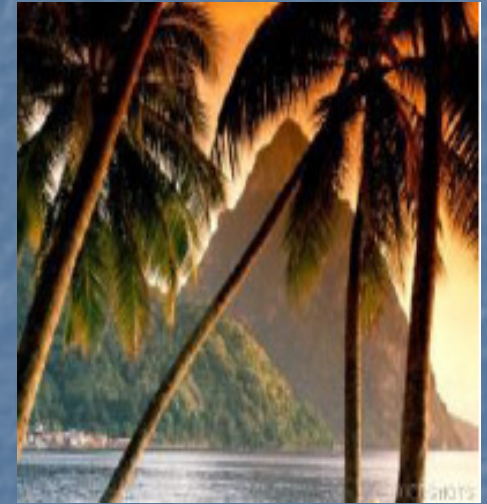
*Creating opportunities for energy  
access and sustainable  
development*

# UN Foundation Overview

- Public charity, created in 1998 with Ted Turner's historic \$1 billion gift to support UN causes
- Builds and implements public-private partnerships to address the world's most pressing problems
- Strengthens and supports the UN and its causes through a blend of advocacy, grant making, and partnerships
- Priority areas include **environment**; children's health, technology; and women and population.
- Within the **environmental area**, priority given to sustainable development and climate change with a focus on RE/EE
  - UNF has given particular attention to the Caribbean and Central American nations (CA/CAR)
  - West African bioenergy assessment now underway

# UN Foundation and Bio-Energy

- International Bioenergy Initiative
- Global Bioenergy Partnership (GBEP)
- Global Sustainable Energy Islands Initiative
- Partnership with the Italian Ministry of Environment
- Support to AOSIS member countries on adaptation and mitigation, renewable energy
- Bioenergy wiki



***UNF is also a partner in the in the  
US-Brazil Biofuels Initiative***

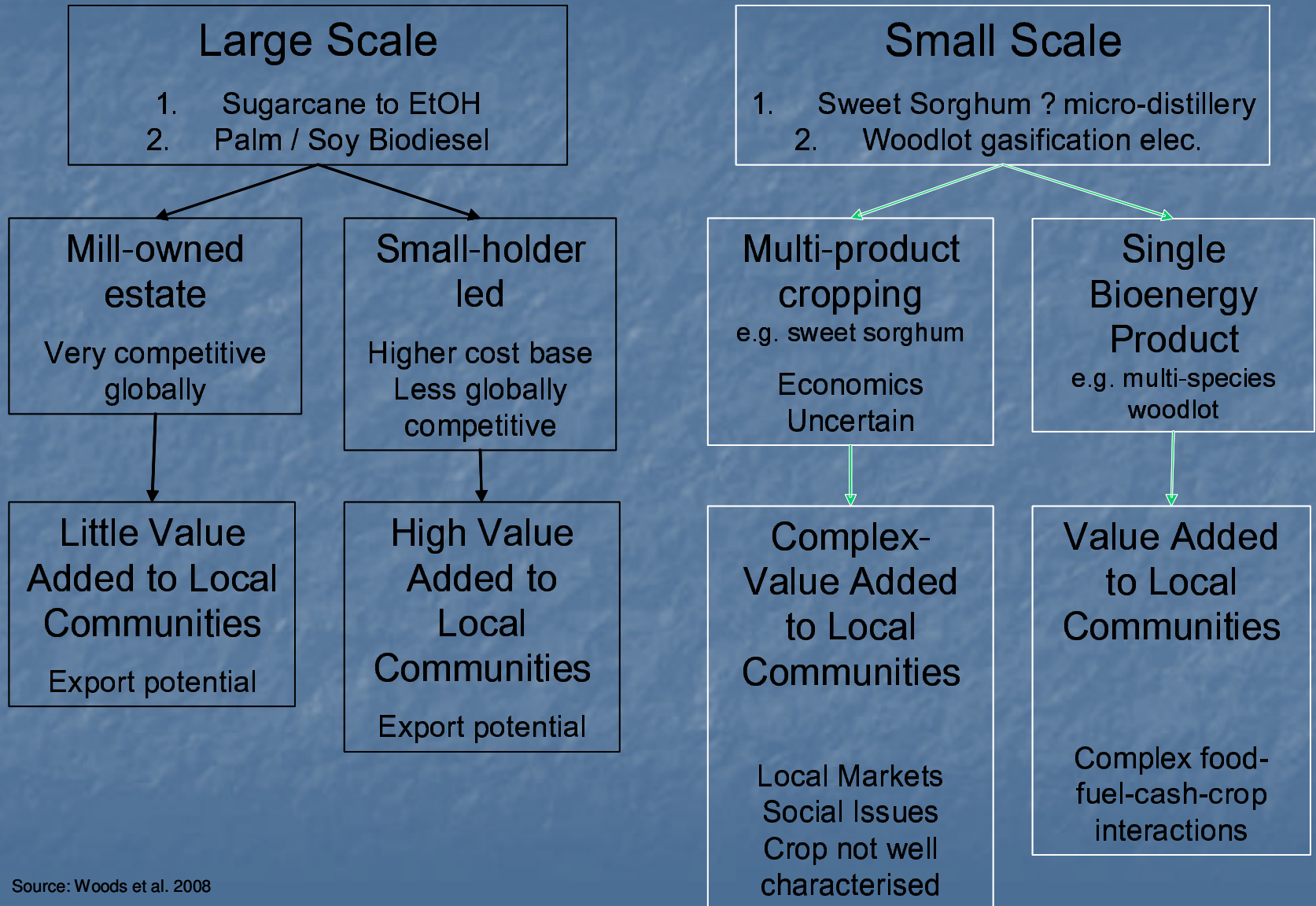
# Bio-Energy Evaluation Tool

- Goal: Develop **user-friendly** decision support tool to evaluate country economic, agricultural, environment, & energy impacts of bioenergy policies/strategies
  - Easy, **quick-turnaround basis**
- Demonstrate BEET for selected bioenergy policies and strategies in the case of El Salvador, such as:
  - Developing bioenergy for domestic use
  - Increasing exports of biofuels
  - Food vs bioenergy tradeoffs
- Developing Alpha version by 3/08; already interest in expansion
- Working with IDB, FAO, Government of El Salvador, US-Brazil Biofuels Partnership to apply methodology.

# Why Bioenergy?

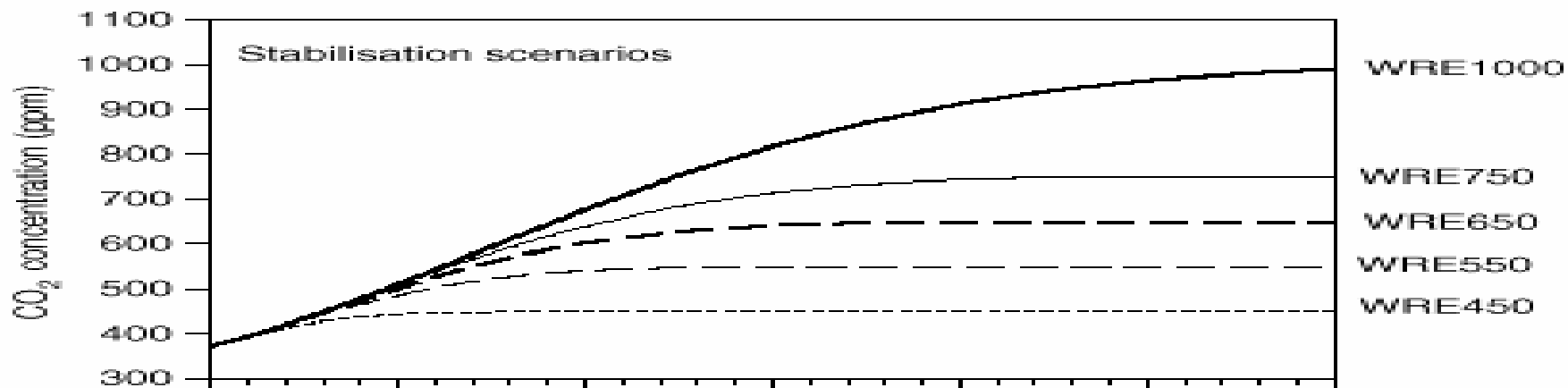
- Potential for energy access in underserved areas – urban poor, rural off-grid communities
- Potential to contribute to climate change mitigation
- Only current alternative fuel for transport sector

# Bioenergy Development Options

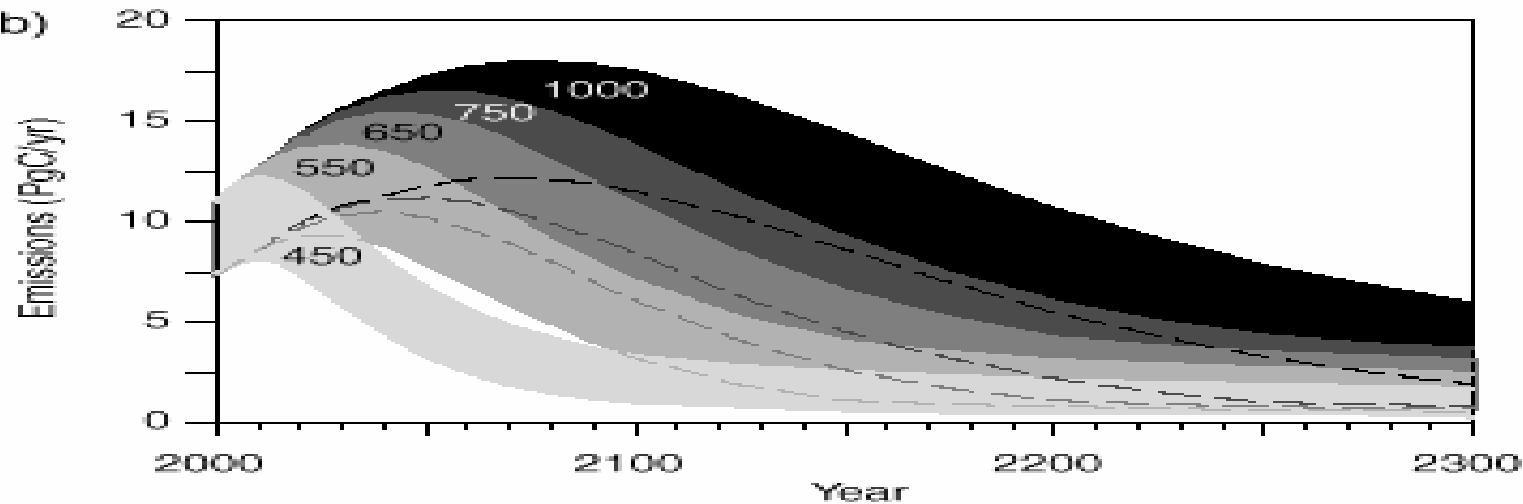


# CLIMATE STABILIZATION SCENARIOS

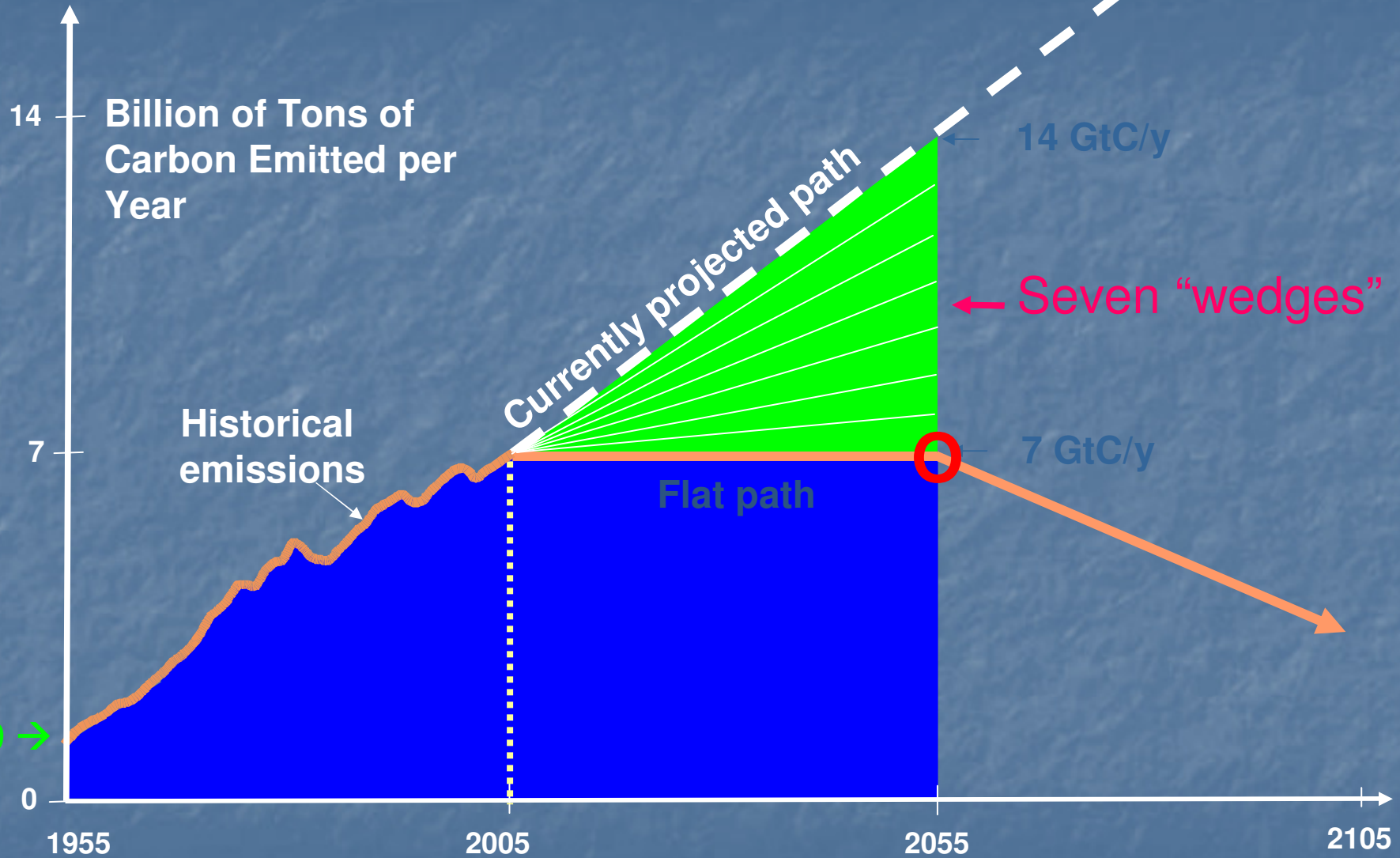
(a)



(b)



# Wedges

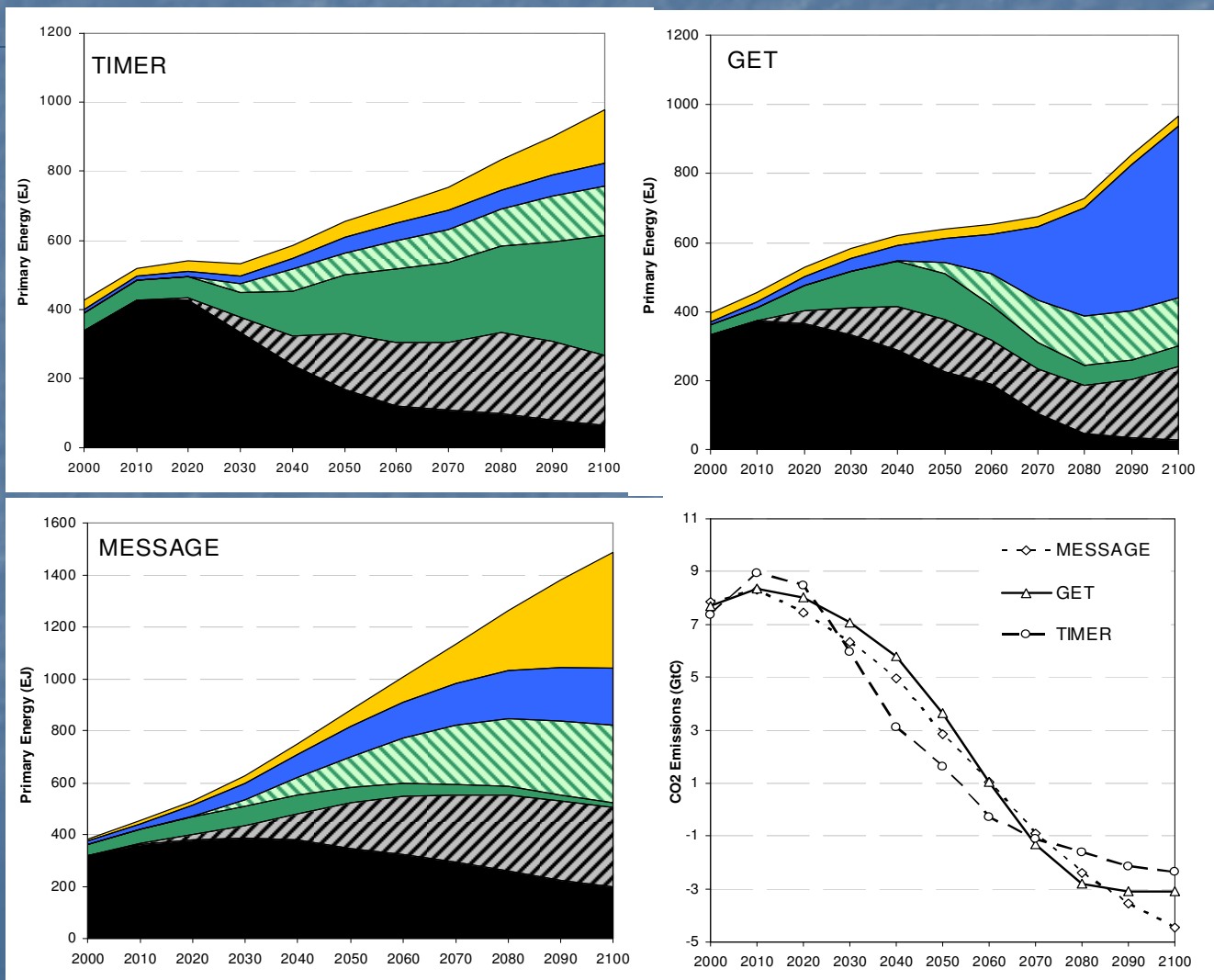


# Wedges to reduce GHG emissions

- **Energy Efficiency and Conservation**
  - **Economy-wide-carbon-intensity reduction**
    - Efficient vehicles
    - Reduced use of vehicles
    - Efficient buildings
    - Efficient baseload coal plants
- **Fuel Shift**
  - Gas baseload power for coal baseload power
  - Alternative transport fuels
- **CO2 Capture and Storage**
  - Capture CO2 at baseload power plant
  - Capture CO2 at H2 plant
  - Capture CO2 at coal-to-synfuels plant
- **Nuclear Fission**
  - Nuclear power for electricity-
- **Renewable Electricity and Fuels**
  - Wind
  - PV
  - Wind H2 in fuel-cell car for gasoline in hybrid
  - Biomass fuel for fossil fuel
- **Forests and Agricultural Soils**
  - Reduced forestation, plus reforestation
  - Sustainable forest management
  - Conservation tillage

Source: Robert Socolow, 2005

# Global Energy Portfolio – 2DG Ziel



Thank You!