

d·i·e



Deutsches Institut für
Entwicklungspolitik

German Development
Institute

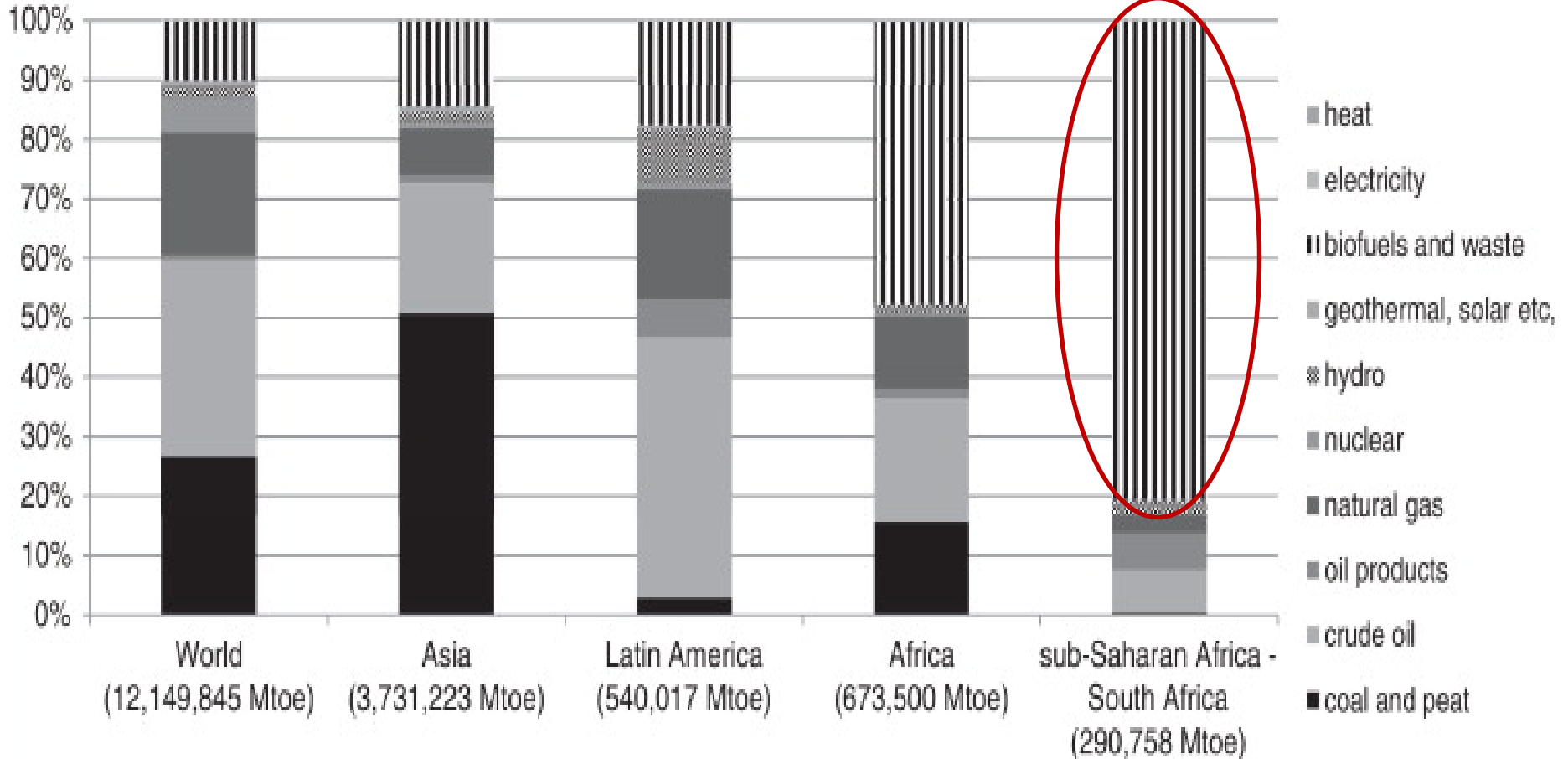
Wood energy, ecosystem services and SDGs

A conceptual framework

Michael Brüntrup

**International Workshop of the GBEP Task Force on Sustainability
*Linkages between the Sustainable Development Goals (SDG) and the GBEP
Sustainability Indicators for Bioenergy (GSI)*
July 3-4, 2017 in Bonn, Germany**

Regional shares of various primary energy carriers in total energy consumption (2009)



Current Opinion in Environmental Sustainability

Source: Liyama et al. (2014)

Importance of wood energy in Sub-Saharan African countries

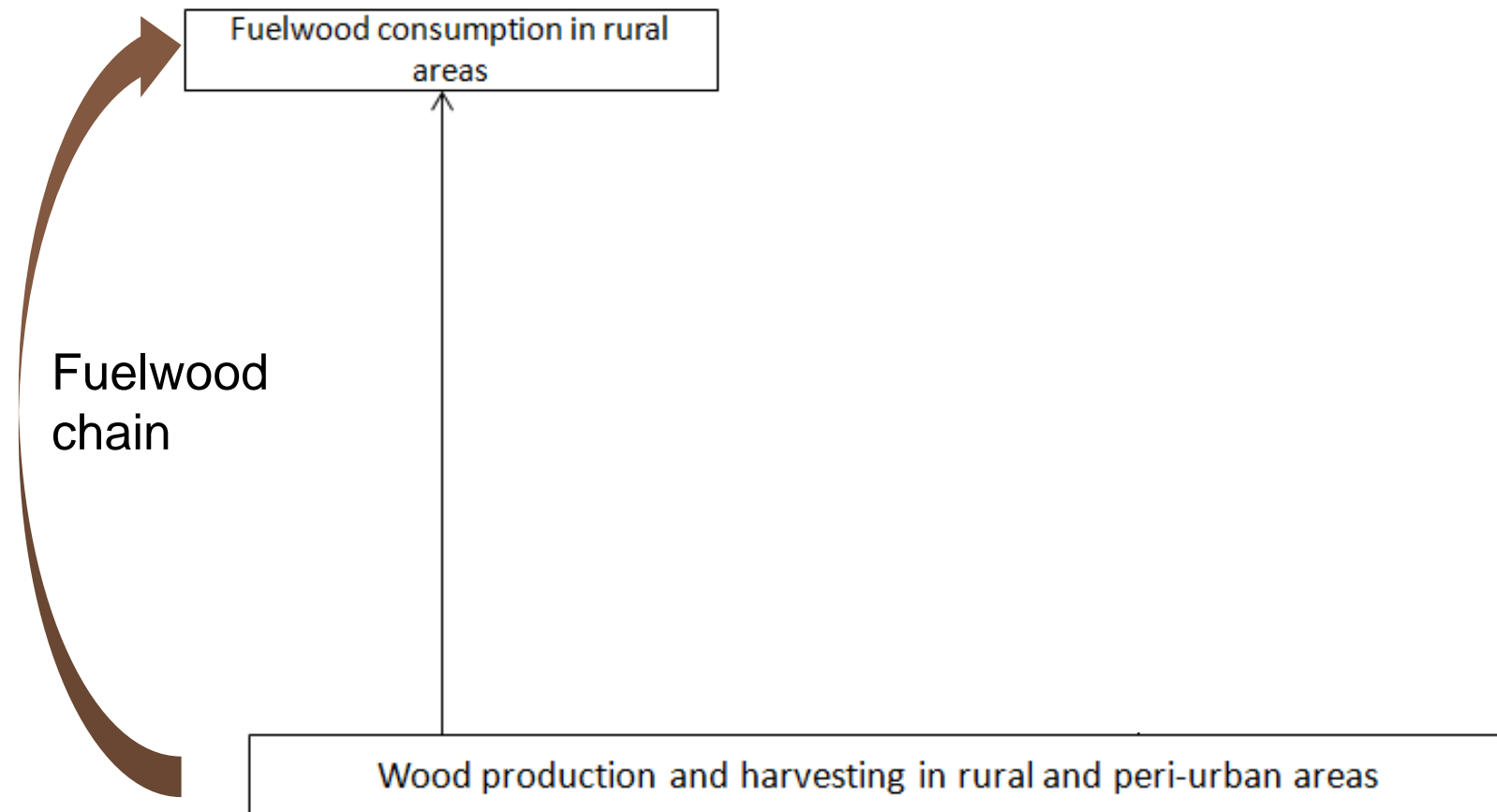


- Up to 3,5% of GDP (Zulu 2010 for Malawi)
- Up to 90% of primary energy use

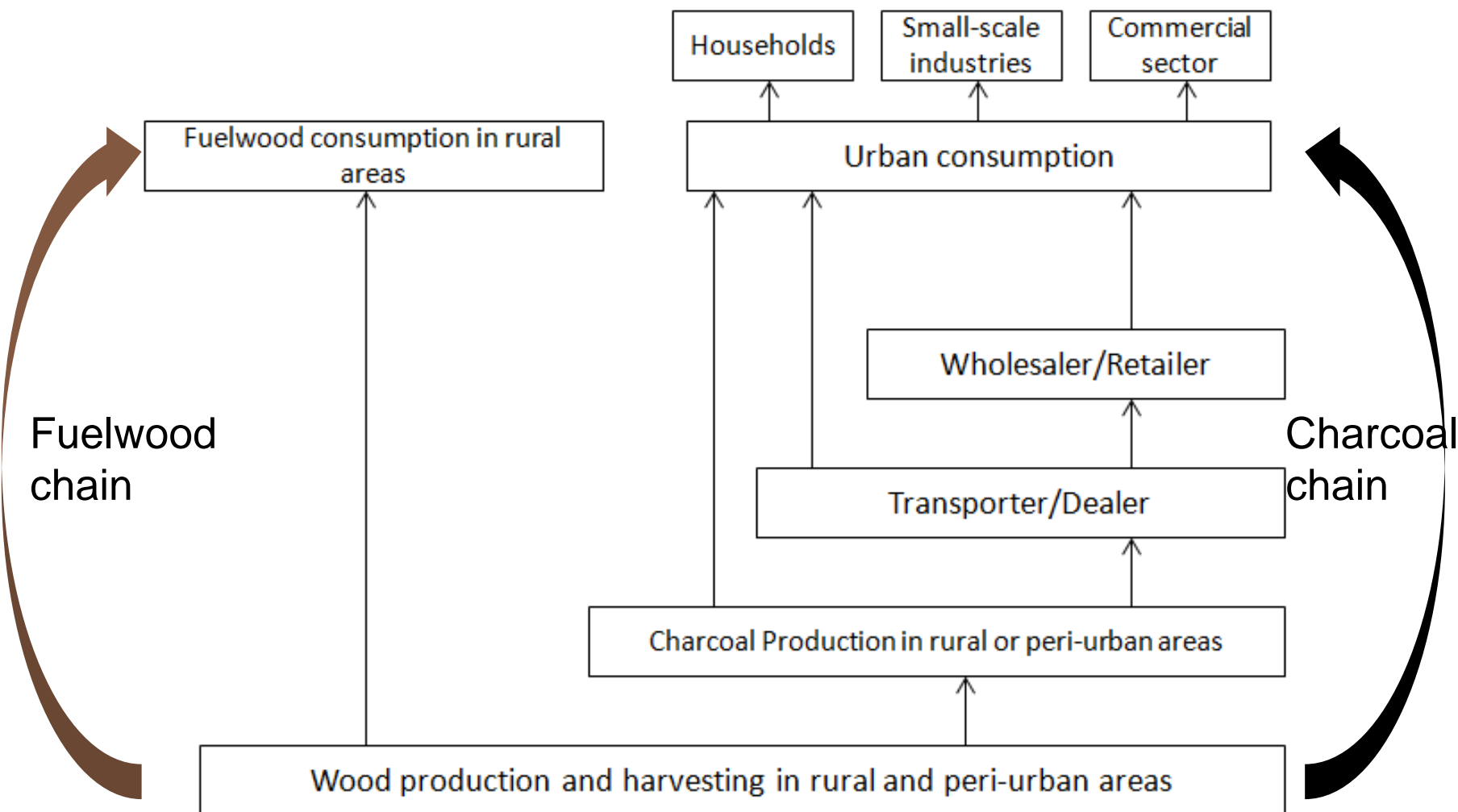
	Rural	Urban	Total
Firewood, dung, crop residues	94%	41%	75%
Charcoal	4%	34%	15%

Source: Maes & Verbist (2012)

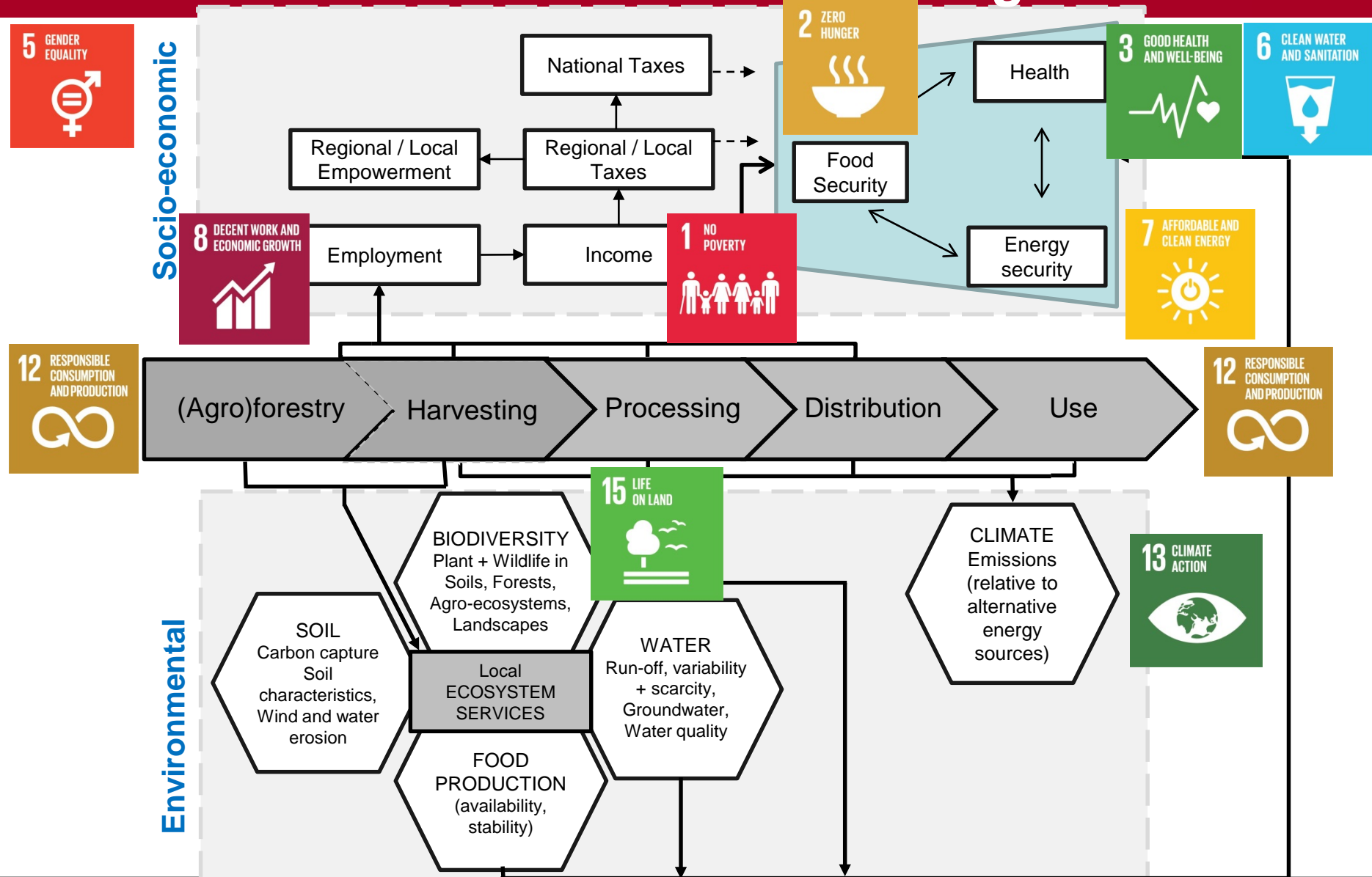
- About 13 million jobs in commercial biomass energy sector (Openshaw 2010)
- Strong role of women in sector (Ghana: 65%, Mombu and Ohemeng 2008)
- Almost exclusively women in consumption
- Poor may or may not be disproportionately implied in production
- Important stress production
- Contributes up to 30% of deforestation (Chidumayo & Gumbo 2013), but contested
- Most likely will increase further (urban and rural)



Generalised woodfuel value chains



The Charcoal value chain, ecosystem services and socio-economic linkages





Thank you for your attention

Questions?

Deutsches Institut für Entwicklungspolitik (DIE)

Tulpenfeld 6

D-53113 Bonn

Telefon: +49 (0)228-949 27-0

E-Mail: Michael.Bruentrup@die-gdi.de

www.die-gdi.de

www.facebook.com/DIE.Bonn